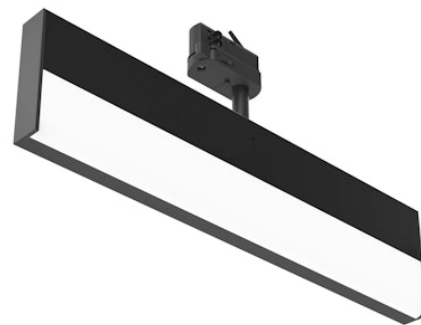


# FLOS

09.7505.14.DA Black

## UT Pro Wall-Washer Dali Version GA-600

Designed by FLOS Architectural, 2017



LED - Top LED - 25.2W - 1700lm - 4000K - Beam° 36

Wall-Washer lighting module to be installed in standard 3-phase track with LED light source. 220-240V power supply integrated. DALI version requires dimmable tracks (please refer to the "Tracks" chapter).

Are you a professional and your project needs consulting and support?

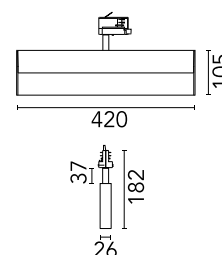
BOOK AN APPOINTMENT

### Main specifications

Mounting	Track
Environments	Indoor dry location
Light source type	LED
Light sources included	Yes
LED type	Top LED
Lamp category	LED
Number of lamps	1
Power (W)	25.2
System power (W)	25.5
Source flux (lm)	3154
Lumen Output (lm)	1700

### Physical

Colour	Black
Trim	No
Orientation	Adjustable
Rotation (°)	360
Longitudinal tilting (°)	15
Length (mm)	420
Net weight (kg)	1.05
IP internal	20
IP external	20



### Download

Mounting instructions [↓ PDF](#)

Item information [↓ JPG](#)

### Photometric Files

LDT / IES [↓ ZIP](#)

### Technical Drawings

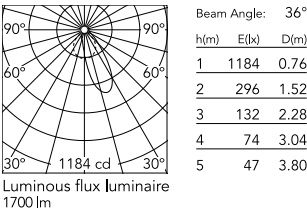
2D [↓ ZIP](#)

3D [↓ ZIP](#)

[Bim](#) [↓ ZIP](#)



Schematic light drawing



### Ecodesign and Energy Labelling

Replaceable (LED only) light source by a professional

Replaceable control gear by a professional

Photometric

Lighting type	Direct
Light distribution	Asymmetric
CCT (K)	4000
Beam angle C0-180 (°)	36
Beam angle C90-270 (°)	75

Electrical

Insulation class	I
Frequency (Hz)	50/60
Main voltage (Vac)	220-240
Alternating current voltage (Vac)	230
LED current (mA)	700
Power supply	Integrated
Dimmable	Yes
Power supply type	Non Dimmable, Dimmable DALI 1
Dimming interface	Remote Dimmable (Dimmer Not Included)
Emergency	No