

# FLOS

60.3103.29 Aluminum

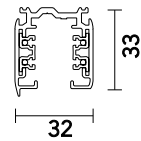
## Three Phase Track Surface/Pendant 3000 mm

Designed by FLOS Architectural, 2013

Length: 3000 - Suspension, Ceiling surface



GLOBAL TRACK offers benefits for advanced installations: the main connectors are feedable and the feeding cable can be hidden under the elegant suspension accessories. GLOBAL TRACK lighting tracks are designed for easy surface mounting on ceilings and walls, or recessed mounting in suspended ceilings. Lighting tracks can be suspended at any desired height. Other advantages of the three-circuit system are its high loading capacity and the possibility of forming independent fixture groups in all three circuits. This permits illumination of the most demanding environments.



Are you a professional and your project needs consulting and support?

[BOOK AN APPOINTMENT](#)

### Main specifications

Mounting	Suspension, Ceiling surface
Environments	Indoor dry location

### Physical

Colour	Aluminum
Trim	No
Length (mm)	3000
Net weight (kg)	2.40
IP internal	20
IP external	20

### Download

[Mounting instructions](#)

[↓ PDF](#)



## Electrical

Insulation class I

---

Emergency No

## Accessories & Power Supply



OPTIONAL  
Accessory

60.3008.11

Attachment on track for steel cable suspension with M6 thread end



OPTIONAL  
Accessory

60.3008.14

Attachment on track for steel cable suspension with M6 thread end



OPTIONAL  
Accessory

Installation

60.3014.14

1 m suspension rod with ceiling rose kit, M6 thread



OPTIONAL  
Accessory

Installation

60.3016.11

Blind end



OPTIONAL  
Accessory

60.3016.12

Blind end



OPTIONAL  
Accessory

60.3016.14

Blind end



OPTIONAL  
Accessory

60.3018.11

Attachment on track for rod suspension M6 thread



OPTIONAL  
Accessory

Electrical

60.3018.14

Attachment on track for rod suspension M6 thread



OPTIONAL  
Accessory

Installation

60.3022.11

Recessed box for fix-point

OPTIONAL  
Accessory

Installation

60.3022.14

Recessed box for fix-point

OPTIONAL  
Accessory

Installation

60.3023.11

Fix-point

OPTIONAL  
Accessory

Installation

60.3023.14

Fix-point



OPTIONAL  
Accessory

Installation

60.3025.11

Bracket

OPTIONAL  
Accessory

Installation

60.3025.14

Bracket

OPTIONAL  
Accessory

Installation

60.3025.29

Bracket

OPTIONAL  
Accessory

Electrical

60.3028.11

Connector 90° Outside



OPTIONAL  
Accessory

Electrical

60.3028.14

Connector 90° Outside



OPTIONAL  
Accessory

60.3028.29

Connector 90° Outside



OPTIONAL  
Accessory

Electrical

60.3029.11

Connector 90° Inside



OPTIONAL  
Accessory

Electrical

60.3029.14

Connector 90° Inside



OPTIONAL  
Accessory

Electrical

60.3029.29

Connector 90° Inside



OPTIONAL  
Accessory

Electrical

60.3036.11

Cross Coupling

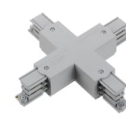


OPTIONAL  
Accessory

Electrical

60.3036.14

Cross Coupling



OPTIONAL  
Accessory

Electrical

60.3036.29

Cross Coupling



OPTIONAL  
Accessory

Electrical

60.3043.11

Mean connector



OPTIONAL  
Accessory

Electrical

60.3043.14

Mean connector



OPTIONAL  
Accessory

Electrical

60.3043.29

Mean connector



OPTIONAL  
Accessory

Electrical

60.3044.11

Straight connector



OPTIONAL  
Accessory

Electrical

60.3044.12

Straight connector



OPTIONAL  
Accessory

Electrical

60.3044.14

Straight connector



OPTIONAL  
Accessory

Electrical

60.3046.11

Corner adjustable connector



OPTIONAL  
Accessory

Electrical

60.3046.14

Corner adjustable connector



OPTIONAL  
Accessory

Electrical

60.3046.29

Corner adjustable connector



OPTIONAL  
Accessory

Installation

60.3047.11

Connector T - Inside Right



OPTIONAL  
Accessory

Installation

60.3047.14

Connector T - Inside Right



OPTIONAL  
Accessory

Installation

60.3047.29

Connector T - Inside Right



OPTIONAL  
Accessory

Installation

60.3048.29

Connector T - Inside Left



OPTIONAL  
Accessory

Installation

60.3049.11

Connector T - Outside Right



OPTIONAL  
Accessory

Installation

60.3049.14

Connector T - Outside Right



OPTIONAL  
Accessory

Installation

60.3051.11

Connector T - Outside Left



OPTIONAL  
Accessory

Installation

60.3051.14

Connector T - Outside Left



OPTIONAL  
Accessory

Installation

60.3051.29

Connector T - Outside Left



OPTIONAL  
Accessory

Mounting

60.3054

Lead bending key



OPTIONAL  
Accessory

Installation

60.3057.11

Attachment on track for wire  
suspension



OPTIONAL  
Accessory

Installation

60.3057.29

Attachment on track for wire  
suspension



OPTIONAL  
Accessory

Installation

60.3092.11

Power supply rose cover



OPTIONAL  
Accessory

Installation

60.3094.11

Ceiling fitting with rose



OPTIONAL  
Accessory

Installation

60.3094.14

Ceiling fitting with rose



OPTIONAL  
Accessory

Installation

60.3095.29

Lead-weighted wire 1500 mm



OPTIONAL  
Accessory

Installation

60.3097.11

1 m suspension rod with ceiling  
rose with m6 thread



OPTIONAL  
Accessory

Installation

60.3097.14

1 m suspension rod extension  
set with m6 thread



OPTIONAL  
Accessory

Installation

60.3090.11A

Track cover strip L 2000 mm



OPTIONAL  
Accessory

Installation

60.3090.14A

Track cover strip L 2000 mm



OPTIONAL  
Accessory

Electrical

60.3037.29

Flexible connector



OPTIONAL  
Accessory

Electrical

60.3038.14

Live end right



OPTIONAL  
Accessory

Electrical

60.3038.12

Live end right



OPTIONAL  
Accessory

Electrical

60.3038.11

Live end right



OPTIONAL  
Accessory

Electrical

60.3039.14

Live end left



OPTIONAL  
Accessory

Electrical

60.3039.12

Live end left



OPTIONAL  
Accessory

Electrical

60.3039.11

Live end left



OPTIONAL  
Accessory

Installation

60.3023.29

Fix-point



OPTIONAL  
Accessory

Electrical

60.3037.11

Flexible connector



OPTIONAL  
Accessory

Electrical

60.3037.14

Flexible connector



OPTIONAL  
Accessory

Installation

60.3083.29

Complete wall support 70 mm



OPTIONAL  
Accessory

60.3093.29

Bracket for fixing track to wall or ceiling



OPTIONAL  
Accessory

Installation

60.3014.11

Suspension rod with 1m rose.  
M6 thread



OPTIONAL  
Accessory

Installation

60.3096.29

Lead-weighted wire 3000 mm



OPTIONAL  
Accessory

Installation

60.3048.14

Connector T - Inside Left



OPTIONAL  
Accessory

Installation

60.3048.11

Connector T - Inside Left