

FLOS

■ F6486030 Black

String Light - Sphere head - 12mt cable

Designed by Michael Anastassiades, 2014

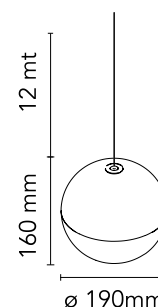


21W - 1515lm - 2700K

Suspension lamp providing diffused light. Black, white or blue varnished die-cast aluminium body coated with clear soft-touch varnish. Optical diffuser in opal PC. Suspension system of 12 metres with Kevlar reinforced coaxial cable. Available with wall/ceiling connection in black PC and power supply with floor switch in black varnished PC. The on/off switch is electronic with optical and touch dimm mechanism included or touch dimm and CASAMBI Ready version. Dimmer included. Compulsory to add either floor switch or ceiling/wall rose.

Are you a professional and your project needs consulting and support?

BOOK AN APPOINTMENT



Main specifications

| | |
|------------------------|---------------------|
| EAN | 8059607041390 |
| Mounting | Suspension |
| Environments | Indoor dry location |
| Light source type | LED |
| Light sources included | Yes |
| LED type | LED array |
| Power (W) | 21 |
| Lumen Output (lm) | 1515 |

Physical

| | |
|---------------------|-------|
| Colour | Black |
| Length (mm) | 190 |
| Cord colour | Black |
| Cord length (mm) | 12000 |
| Net weight (kg) | 1.12 |
| Package height (mm) | 300 |
| Package width (mm) | 300 |
| Package length (mm) | 300 |
| Package volume (m3) | 0.03 |
| IP internal | 20 |

Download

| | |
|-----------------------|-------|
| Mounting instructions | ↓ PDF |
| Mounting instructions | ↓ PDF |
| Mounting instructions | ↓ PDF |

Photometric Files

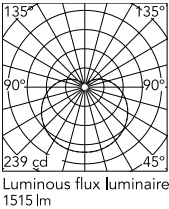
| | |
|-----------|-------|
| LDT / IES | ↓ LDT |
|-----------|-------|

Technical Drawings

| | |
|-----|-------|
| Bim | ↓ ZIP |
|-----|-------|



Schematic light drawing



Ecodesign and Energy Labelling

This product contains a light source of energy efficiency class D



Replaceable (LED only)
light source by a
professional

Photometric

| | |
|--------------------|----------------|
| Light distribution | Roto symmetric |
| CCT (K) | 2700 |

Electrical

| | |
|---------------------|-------------------|
| Insulation class | III |
| Main voltage (Vac) | 48 |
| Forward voltage (V) | 48 |
| Power supply | Remote excluded |
| Dimmable | Yes |
| Power supply type | Electronic 48V |
| Dimming interface | Dimmer Integrated |
| Batteries inside | No |

Accessories & Power Supply



REQUIRED

F6482030

String Light Rose



REQUIRED

F6484030

String Light Floor switch

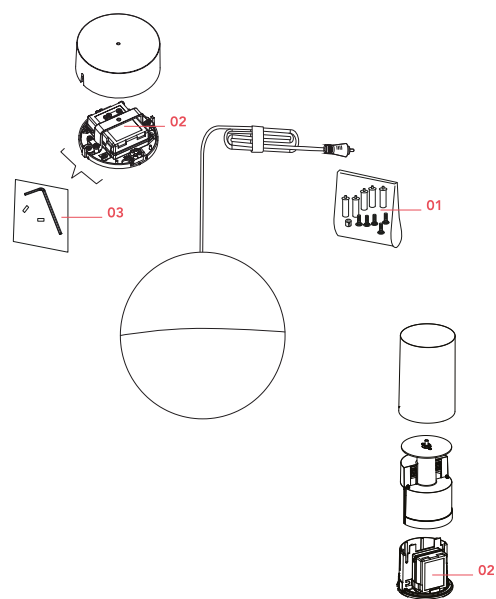


OPTIONAL

F6485030

String Light Kit cable

Spare Parts



- | | | |
|-----|--|-----------|
| 01. | String Light black hooks & cable clamps 5-unit kit | RF6480130 |
| 02. | Power supply unit for led | RF22934 |
| 03. | String Light Kit with allen key and screws for ceiling rose assembly | RF6480200 |



RF6480130

String Light black hooks & cable
clamps 5-unit kit



RF22934

Power supply unit for led



RF6480200

String Light Kit with allen key and
screws for ceiling rose assembly