

FLOS



FA1051730012.A Forest Green

Aimer 1 Rgb NEW

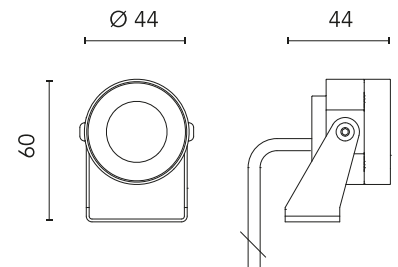
Designed by FLOS Outdoor, 2011



RGB LED source included. Remote electrical power supply with DMX 3chx350mA interface to be ordered separately. Serial connection. Equipped with a 2000 mm protruding section of neoprene cable and a kit with crimpable connectors and adhesive heat-shrinkable sleeves that guarantee the tightness of the connection. Sandblasted screen-printed glass. The metal nail for ground installation needs to be ordered separately.

Are you a professional and your project needs consulting and support?

[BOOK AN APPOINTMENT](#)



Main specifications

EAN	8054793608297
Mounting	Ground
Environments	Outdoor wet location
Light source type	LED
Light sources included	Yes
LED type	Power LED
Number of lamps	1
Power (W)	3
System power (W)	3.4

Physical

Colour	Forest Green
Orientation	Directional
Longitudinal tilting (°)	189
Net weight (kg)	0.4
Package height (mm)	90
Package width (mm)	140
Package length (mm)	140
IP internal	67
IP external	66

Download

[Mounting instructions](#)

[ZIP](#)

Ecodesign and Energy Labelling



Replaceable (LED only)
light source by a
professional

Photometric

Light distribution	Symmetric
CCT (K)	RGB
Extreme cut off	No

Electrical

Insulation class	III
Frequency (Hz)	50/60
Power supply	Remote excluded
Dimmable	Yes
Power supply type	Dimmable DMX
Dimming interface	Remote Dimmable (Dimmer Not Included)
Emergency	No

Notes

Please check with your referent person in our Front Office if a code modification is needed to meet the required certification compliance

Accessories & Power Supply



OPTIONAL
Accessory

F990B10A000
DMX controller; dimmer switch
for recessed box (60mm hole
centres)



OPTIONAL
Accessory

F990B11A000
DMX controller; stand-alone/pc
interface.



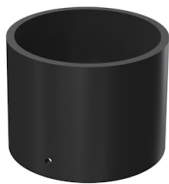
OPTIONAL
Accessory

F990B13A000
DMX splitter 512



OPTIONAL
Accessory

F990B12A000
DMX cable - shielded twisted pair
with 110 Ohm constant
impedance



OPTIONAL
Accessory

FA5230
Visor for Aimer 1



OPTIONAL
Accessory

FA136
Ground Spike Aimer 1/Aimer
2/Aimer 3/Perseo 2



OPTIONAL
Power supply

F990B22A000
Power supply with DMX interface
for RGB fixtures 36W/220÷240v-
3CH x 350mA (3CH x 10 x 1W)
DMX control allowed IP67 Class I
Selv Eq.