

# FLOS

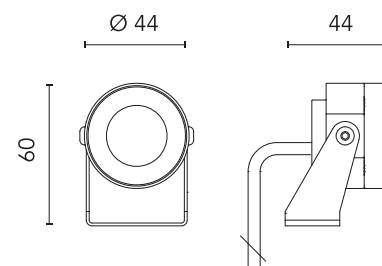
FA1051442018.A Deep Brown

## Aimer 1 Constant Current NEW

Designed by FLOS Outdoor, 2011



LED source included. Remote power supply 350/500 mA ON/OFF and dimmable 1-10V or DALI. Must be ordered separately. Serial connection. Equipped with a 2000 mm protruding section of neoprene cable and a kit with crimpable connectors and adhesive heat-shrinkable sleeves that guarantee the tightness of the connection. Extraclear transparent glass. The metal nail for ground installation needs to be ordered separately.



Are you a professional and your project needs consulting and support?

BOOK AN APPOINTMENT

### Main specifications

|                        |                      |
|------------------------|----------------------|
| EAN                    | 8054793607627        |
| Mounting               | Ground               |
| Environments           | Outdoor wet location |
| Light source type      | LED                  |
| Light sources included | Yes                  |
| LED type               | Power LED            |
| Number of lamps        | 1                    |
| Power (W)              | 2                    |
| System power (W)       | 1.6                  |
| Source flux (lm)       | 144                  |
| Lumen Output (lm)      | 102                  |

### Physical

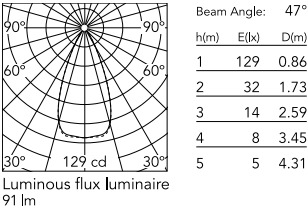
|                          |             |
|--------------------------|-------------|
| Colour                   | Deep Brown  |
| Orientation              | Directional |
| Longitudinal tilting (°) | 189         |
| Net weight (kg)          | 0.4         |
| Package height (mm)      | 90          |
| Package width (mm)       | 140         |
| Package length (mm)      | 140         |
| IP internal              | 67          |
| IP external              | 66          |

### Ecodesign and Energy Labelling

This product contains a light source of energy efficiency class F



Schematic light drawing



Photometric

|                        |           |
|------------------------|-----------|
| Light distribution     | Symmetric |
| CCT (K)                | 2700      |
| CRI>                   | 80        |
| Beam angle C0-180 (°)  | 46        |
| Beam angle C90-270 (°) | 46        |
| Extreme cut off        | No        |

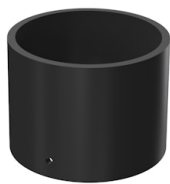
Electrical

|                   |   |
|-------------------|---|
| Insulation class  | III   |
| Frequency (Hz)    | 50/60   |
| Power supply      | Remote excluded                                     |
| Dimmable          | Yes   |
| Power supply type | Non Dimmable,<br>Dimmable 1-10V,<br>Dimmable DALI 1 |
| Dimming interface | Remote Dimmable<br>(Dimmer Not<br>Included)         |
| Emergency         | No  |

Notes

Please check with your referent person in our Front Office if a code modification is needed to meet the required certification compliance

Accessories & Power Supply



OPTIONAL  
Accessory

FA5230

Visor for Aimer 1



OPTIONAL  
Accessory

FA136

Ground Spike Aimer 1/Aimer 2/Aimer 3/Perseo 2



OPTIONAL  
Power supply

FA68

Power supply 10 x 1W/  
100÷265V - Iout 350mA  
(7x1W/110V) IP40 Class II Selv  
Eq.



OPTIONAL  
Power supply

FA129

Power supply 16 x 1W/  
110÷240V - Iout 350mA  
(12x1W@110V) IP20 Class II Selv  
Eq. Dimmable Push-Dimm Or  
1.10V



OPTIONAL  
Power supply

FA184

Power supply 16 x 1W/  
110÷240V - Iout 350mA  
(12x1W@110V) IP67 Class II Selv  
Dimmable Push-Dimm Or 1.10V



OPTIONAL  
Power supply

FA135

Power supply 13 x 2W/  
110÷240V - Iout 500mA  
(7x2W@110V) IP20 Class II Selv.  
Eq. Dimmable Push-Dimm Or  
1.10V



OPTIONAL  
Power supply

FA218

Power supply 13 x 2W/  
110÷240V - Iout 500mA  
(7x2W@110V) IP67 Class II Selv.  
Dimmable Push-Dimm Or 1.10V



OPTIONAL

F990B34A000

Power Supply dual function C.V.  
Vout 24Vdc 8W, Vin 220÷240V  
C.C. Iout 350mA: 8W, Vin  
220÷240V IP 20 Class II Selv.  
NON Dimmable



## OPTIONAL Power supply

RF25748

Power Supply dual function C.V.

Vout 24Vdc 8W, Vin 220÷240V

C.C. Iout 350mA: 8W, Vin

220÷240V IP 65 Class II Selv.

NON Dimmable