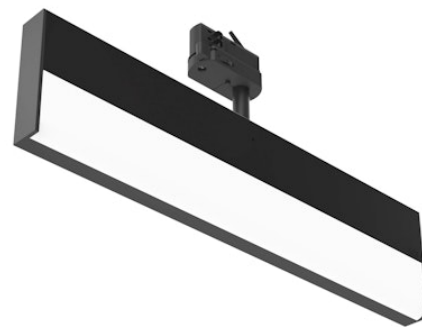


FLOS

09.7504.14.DA Black

UT Pro Wall-Washer Dali Version GA-600

Designed by FLOS Architectural, 2017

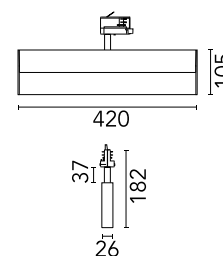


LED - Top LED - 25.2W - 1554lm - 3000K - Beam° 36

Wall-Washer lighting module to be installed in standard 3-phase track with LED light source. 220-240V power supply integrated. DALI version requires dimmable tracks (please refer to the "Tracks" chapter).

Are you a professional and your project needs consulting and support?

[BOOK AN APPOINTMENT](#)



Main specifications

Mounting	Track
Environments	Indoor dry location
Light source type	LED
Light sources included	Yes
LED type	Top LED
Lamp category	LED
Number of lamps	1
Power (W)	25.2
System power (W)	25.5
Source flux (lm)	3176.6
Lumen Output (lm)	1554

Physical

Colour	Black
Trim	No
Orientation	Adjustable
Rotation (°)	360
Longitudinal tilting (°)	15
Length (mm)	420
Net weight (kg)	1.05
IP internal	20
IP external	20

Download

[Mounting instructions](#) PDF

[Item information](#) JPG

Photometric Files

[LDT / IES](#) ZIP

Technical Drawings

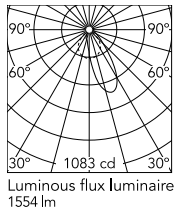
[2D](#) ZIP

[3D](#) ZIP

[Bim](#) ZIP



Schematic light drawing



Photometric

Lighting type	Direct
Light distribution	Asymmetric
CCT (K)	3000
Beam angle C0-180 (°)	36
Beam angle C90-270 (°)	75

Electrical

Insulation class	I
Frequency (Hz)	50/60
Main voltage (Vac)	220-240
Alternating current voltage (Vac)	230
LED current (mA)	700
Power supply	Integrated
Dimmable	Yes
Power supply type	Non Dimmable, Dimmable DALI 1
Dimming interface	Remote Dimmable (Dimmer Not Included)
Emergency	No

Ecodesign and Energy

Labelling

