

FLOS

F023B4BA001 White

Pointbreak Balisage 1 - 80

Designed by Piero Lissoni, 2020

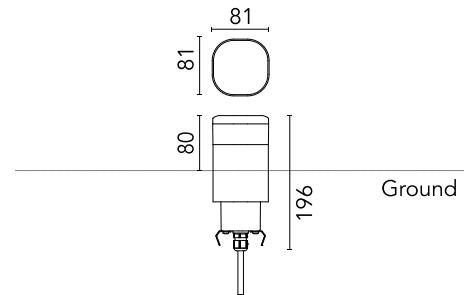


6W - 307lm - 4000K - CRI> 80

LED light source included. Integrated 220-240V ON/OFF and 1-10V/DALI dimmable electrical power. Equipped with one piece of neoprene output cable. IP68 junction system to be ordered separately. Luminaire must be installed with mandatory box for installation, ordered separately.

Are you a professional and your project needs consulting and support?

[BOOK AN APPOINTMENT](#)



Main specifications

| | |
|------------------------|---------------|
| EAN | 8054793368665 |
| Mounting | Ground |
| Light source type | LED |
| Light sources included | Yes |
| LED type | Top LED |
| Number of lamps | 1 |
| Power (W) | 6 |
| System power (W) | 5.6 |
| Source flux (lm) | 625 |
| Lumen Output (lm) | 307 |

Physical

| | |
|---------------------|-------|
| Colour | White |
| Orientation | Fixed |
| Recessed depth (mm) | 116 |
| Length (mm) | 81 |
| Net weight (kg) | 1.7 |
| Package height (mm) | 165 |
| Package width (mm) | 270 |
| Package length (mm) | 230 |
| Package volume (m3) | 0.01 |
| IP internal | 65 |
| H2O stop | Yes |
| Drive Over | No |

Download

[Mounting instructions](#)  ZIP

Photometric Files

[LDT / IES](#)  ZIP

Technical Drawings

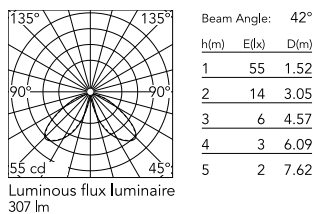
[2D](#)  ZIP

[3D](#)  ZIP

[Bim](#)  ZIP



Schematic light drawing



Photometric

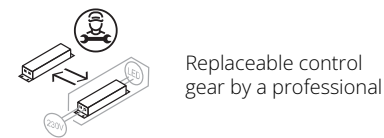
| | |
|--------------------|------------|
| Lighting type | Direct |
| Light distribution | Asymmetric |
| CCT (K) | 4000 |
| CRI> | 80 |
| Extreme cut off | No |

Electrical

| | |
|--------------------|--------------|
| Insulation class | I |
| Frequency (Hz) | 50/60 |
| Main voltage (Vac) | 220-240 |
| Power supply | Integrated |
| Dimmable | No |
| Power supply type | Non Dimmable |
| Dimming interface | Not Dimmable |
| Emergency | No |

Ecodesign and Energy Labelling

This product contains a light source of energy efficiency class D



Accessories & Power Supply



REQUIRED
Accessory

F023Z020000

Box for ground installation