

# FLOS

06.2613.ER Brushed Steel

## Live End Feed Non Dimmable

Designed by FLOS Architectural, 2023

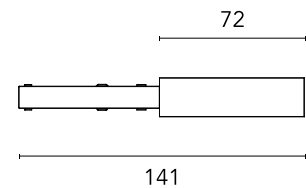


Wall surface, Ceiling surface

Feed unit for remote power supply unit. Power cable inserting is possible both from the Rear and the side.

Are you a professional and your project needs consulting and support?

[BOOK AN APPOINTMENT](#)



### Main specifications

Mounting	Wall surface, Ceiling surface
Environments	Indoor dry location
Light sources included	No

### Physical

Colour	Brushed Steel
Net weight (kg)	0.02
IP internal	20

### Download

[Mounting instructions](#)



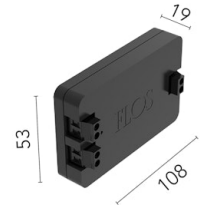
### Photometric

Extreme cut off	No
-----------------	----

### Electrical

Insulation class	III
Forward voltage (V)	24
Power supply	Remote excluded
Dimmable	No
Power supply type	Non Dimmable

## Accessories & Power Supply



REQUIRED  
Power supply

Electrical

60.9352

LED power supply source for remote installation in 24V/200W electric control panel. To avoid problems of overload it is recommended to install a power source every 185W. 100/240V.

REQUIRED  
Power supply

Electrical

60.9777A

Remote Power Supply Non Dimmable 24V. 120W. 220/240V

REQUIRED  
Power supply

Electrical

60.9705A

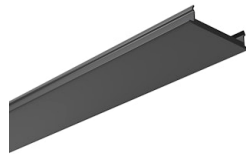
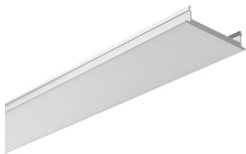
Remote Power Supply Non Dimmable 24V. 60W. 220/240V

OPTIONAL  
Power supply

Electrical

08.0613.14A

Dimmable control box 1-10V, 24/48V. For remote installation.



OPTIONAL  
Component

Installation

06.2618.40A

Track Cover 3000mm

OPTIONAL  
Component

Installation

06.2618.14A

Track Cover 3000mm

OPTIONAL  
Connector

Electrical

06.2608.14

Straight Connector