

FLOS

06.2621.ER Brushed Steel

Linear Connector Feed - Non Dimmable

Designed by FLOS Architectural, 2023



Wall surface, Ceiling surface

Feed intermediate connector. Rear feeding cable entry.

Are you a professional and your project needs consulting and support?

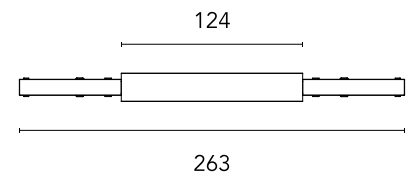
[BOOK AN APPOINTMENT](#)

Main specifications

Mounting	Wall surface, Ceiling surface
Environments	Indoor dry location
Light sources included	No

Physical

Colour	Brushed Steel
Net weight (kg)	0.02
IP internal	20



Download

[Mounting instructions](#)



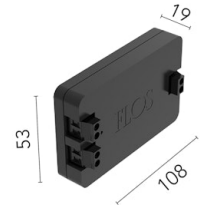
Photometric

Extreme cut off	No
-----------------	----

Electrical

Insulation class	III
Power supply	Remote excluded
Dimmable	No
Power supply type	Non Dimmable

Accessories & Power Supply



REQUIRED
Power supply

Electrical

60.9352

LED power supply source for remote installation in 24V/200W electric control panel. To avoid problems of overload it is recommended to install a power source every 185W. 100/240V.

REQUIRED
Power supply

Electrical

60.9777A

Remote Power Supply Non Dimmable 24V. 120W. 220/240V

REQUIRED
Power supply

Electrical

60.9705A

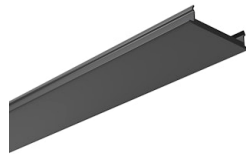
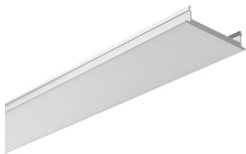
Remote Power Supply Non Dimmable 24V. 60W. 220/240V

OPTIONAL
Power supply

Electrical

08.0613.14A

Dimmable control box 1-10V, 24/48V. For remote installation.



OPTIONAL
Component

Installation

06.2618.40A

Track Cover 3000mm

OPTIONAL
Component

Installation

06.2618.14A

Track Cover 3000mm

OPTIONAL
Connector

Electrical

06.2608.14

Straight Connector