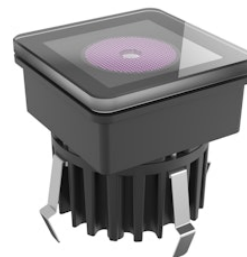


FLOS

FA100174132 Transparent

C-Me Square 70 Rgb

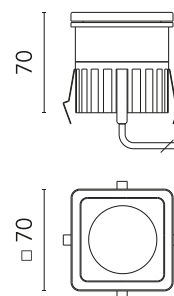
Designed by FLOS Outdoor, 2008



LED source included. Remote electric power supply with DMX 3chx350mA interface, to be ordered separately. Requires a junction box to be ordered separately. The luminaire is equipped with a protruding, neoprene, 200 mm cable and a wiring kit with crimp connectors and adhesive heat-shrink tubing guaranteeing the water tightness of the connection. Extra clear transparent glass.

Are you a professional and your project needs consulting and support?

[BOOK AN APPOINTMENT](#)



Main specifications

EAN	8054793604961
Mounting	In-ground
Environments	Outdoor wet location
Light source type	LED
Light sources included	Yes
LED type	Power LED
Number of lamps	1
Power (W)	3
System power (W)	3.4

Physical

Colour	Transparent
Orientation	Fixed
Net weight (kg)	0.41
Package height (mm)	134
Package width (mm)	134
Package length (mm)	83
IP internal	67
IP external	66

Download

Mounting instructions [ZIP](#)

Ecodesign and Energy Labelling



Replaceable (LED only) light source by a professional



Photometric

Light distribution	Symmetric
CCT (K)	RGB
Extreme cut off	No

Electrical

Insulation class	III
Frequency (Hz)	50/60
Main voltage (Vac)	24
Power supply	Remote excluded
Dimmable	Yes
Power supply type	Dimmable DMX
Dimming interface	Remote Dimmable (Dimmer Not Included)
Emergency	No

Notes

Please check with your referent person in our Front Office if a code modification is needed to meet the required certification compliance'

Dimmable version on request

Accessories & Power Supply



REQUIRED Power supply

F990B22A000

Power supply with DMX interface for RGB fixtures 36W/220÷240v-3CH x 350mA (3CH x 10 x 1W) DMX control allowed IP67 Class I Selv Eq.



REQUIRED Accessory

FA102

Box for Installation C-Me Square 70



OPTIONAL Accessory

F990B10A000

DMX controller; dimmer switch for recessed box (60mm hole centres)



OPTIONAL Accessory

F990B11A000

DMX controller; stand-alone/pc interface.



OPTIONAL Accessory

F990B13A000

DMX splitter 512



OPTIONAL Accessory

F990B12A000

DMX cable - shielded twisted pair with 110 Ohm constant impedance