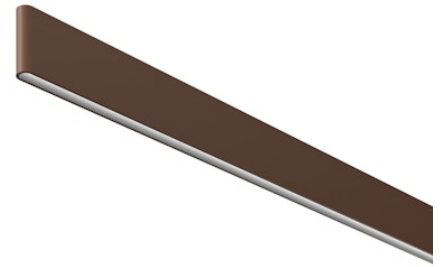


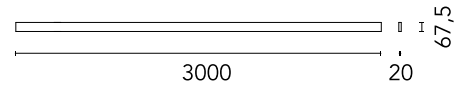
03.8501.18.1V Natural Leather

Belt L 3000 mm Dimmable 1-10V

Designed by Ronan & Erwan Bouroullec



Electromechanical profile for interior use with integrated linear lighting for suspended installation available with 2 or 3 m lengths. Installation via suspension leather or fabric straps on the ceiling and remote power kit, to be ordered separately. Up&Down system controlled via DALI or CASAMBI individually and via 1-10V all together (Broadcast).



Are you a professional and your project needs consulting and support?

[BOOK AN APPOINTMENT](#)

Main specifications

Mounting	Suspension
Environments	Indoor dry location
Light source type	LED
Light sources included	Yes
LED type	Top LED
Number of lamps	1
Power (W)	83
Lumen Output (lm)	2542

Physical

Colour	Natural Leather
Orientation	Fixed
Length (mm)	3000
Net weight (kg)	4.05
Package height (mm)	127
Package width (mm)	3100
Package length (mm)	127
IP internal	20

Download

Mounting instructions [↓ PDF](#)

Photometric Files

LDT / IES [↓ ZIP](#)

Technical Drawings

2D [↓ ZIP](#)

3D [↓ ZIP](#)

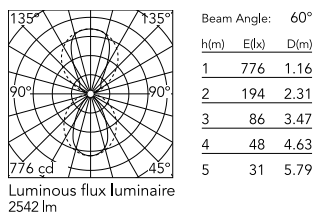
[Bim](#) [↓ ZIP](#)



Ecodesign and Energy Labelling

Replaceable (LED only) light source by a professional

Schematic light drawing



Photometric

Lighting type	Direct, Indirect
Light distribution	Asymmetric
CCT (K)	2700
CRI>	95
McAdam steps (SDCM)	3
Beam angle C0-180 (°)	60
Beam angle C90-270 (°)	100
Beam angle indirect C0-180 (°)	70
Beam angle indirect C90-270 (°)	90

Electrical

Insulation class	III
Forward voltage (V)	48
Power supply	Remote excluded
Dimmable	Yes
Power supply type	Dimmable 1-10V
Dimming interface	Remote Dimmable (Dimmer Not Included)

Notes

Power kit and suspension straps sold separately. For the sizing of the installation keep a safety margin of 15% of the maximum power of the LED power source.

Accessories & Power Supply



REQUIRED
Accessory

Installation

03.8512.18

Suspension strap L 3000 mm



REQUIRED
Accessory

03.8510.18

Suspension strap L 1000 mm



REQUIRED
Accessory

Installation

03.8514.18

Suspension strap L 2500 mm

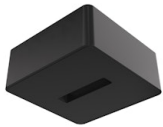


REQUIRED
Accessory

Installation

03.8511.18

Suspension strap L 2000 mm



REQUIRED
Accessory

08.0194.00

Individual Surface Feed Box



REQUIRED
Accessory

Installation

03.8520.18

48-V Power Loop L 1500 mm



REQUIRED
Power supply

Electrical

60.9607

LED power supply source for
remote installation, 110Vac-150W
/ 220Vac-200W



REQUIRED
Accessory

Installation

03.8521.18

48-V Power Loop L 2500 mm

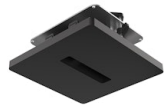


REQUIRED
Accessory

Installation

03.8522.18

48-V Power Loop L 3500 mm

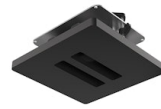


REQUIRED
Accessory

Installation

08.0180.00

Individual Ceiling Feed Box



REQUIRED
Accessory

Installation

08.0181.00

Double Ceiling Feed Box



REQUIRED
Accessory

Installation

08.0182.00

Wall Mounted Feed Box



REQUIRED
Power supply

Electrical

60.9170

LED power supply source for
remote installation, 48V/120W.
220/240 Vac

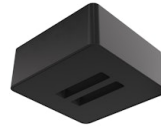


REQUIRED
Accessory

Installation

03.8513.18

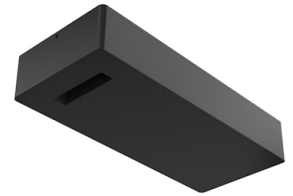
Suspension strap L 1500 mm



REQUIRED
Accessory

08.0195.00

Double Surface Feed Box



REQUIRED
Power supply

Installation

06.0173.14

Surface Driver Box 96W - 48V,
110-240V.