

FLOS

F0303000 Steel

Arco Led

Designed by Achille and Pier Giacomo Castiglioni, 1962

28W - 1224lm - 2700K

Floor lamp providing direct light. White Carrara marble base. Satin-finish stainless steel telescopic stem. Pressed, polished and zapon-varnished aluminum swiveling and height-adjustable reflector.

Are you a professional and your project needs consulting and support?

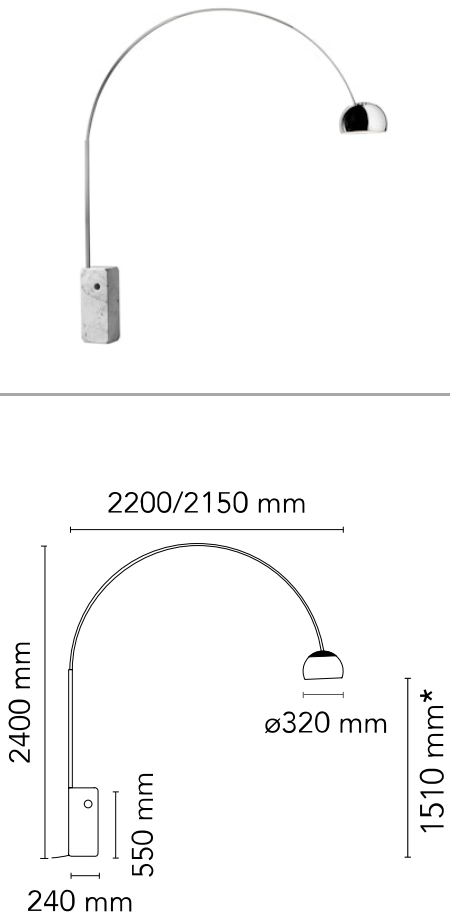
BOOK AN APPOINTMENT

Main specifications

EAN	8059607000991
Mounting	Floor
Environments	Indoor dry location
Light source type	LED
Light sources included	Yes
LED type	LED array
Power (W)	28
Lumen Output (lm)	1224

Physical

Colour	Steel
Length (mm)	2200
Cord colour	Black
Net weight (kg)	63.85
Package volume (m3)	0.24
IP internal	20



*The diffuser can be adjusted to 1700 mm or 1850 mm.

Download

Mounting instructions	PDF
Mounting instructions	PDF
Mounting instructions	PDF
Mounting instructions	PDF

Photometric Files

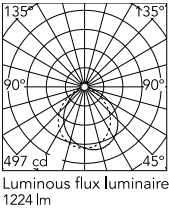
LDT / IES	LDT
-----------	-----

Technical Drawings

2D	ZIP
3D	ZIP
Bim	ZIP



Schematic light drawing



Photometric




Lighting type	Direct
Light distribution	Asymmetric
CCT (K)	2700
Extreme cut off	No

Electrical




Insulation class	III
Frequency (Hz)	50/60
Main voltage (Vac)	100-240
Power supply	Remote included
Dimmable	Yes
Power supply type	Electronic 48V
Dimming interface	Dimmer Integrated
Plug type	Type A, Type C, Type G
Batteries inside	No

Ecodesign and Energy Labelling

This product contains a light source of energy efficiency class D

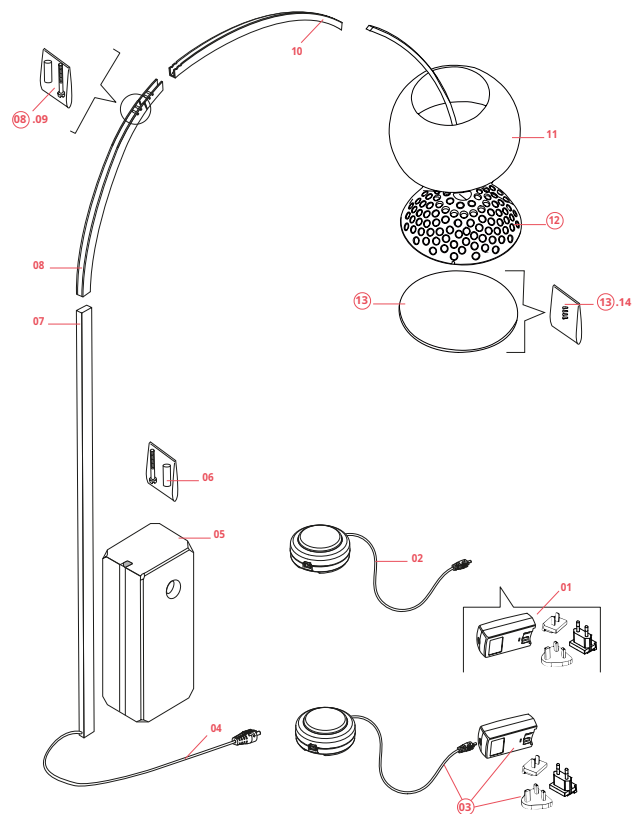


Replaceable (LED only) light source by a professional



Replaceable control gear by an end-user

Spare Parts



- | | | |
|-----|---|-----------|
| 01. | Black plug assembly kit & 48V driver | RF6600130 |
| 02. | Arco Led Switch dimmer 600Ma for new version | RF26383 |
| 03. | Arco Led Switch dimmer 400mA assembly for old version | RF0303600 |
| 04. | Arco Led Middle electric cable with connectors | RF20805 |
| 05. | Marble base | F0310000 |
| 06. | Fixing screw with joint | RF0300100 |
| 07. | Inox stem | RF21041 |
| 08. | Long inox channel | RF02970 |
| 09. | Pins and screw set | RF0300200 |
| 10. | Medium inox channel | RF02971 |
| 11. | Polished reflector | RF00797 |
| 12. | Arco Led Small inox channel with grid and led | RF0303400 |
| 13. | Arco Led Optical led diffuser with fixing screws | RF0303200 |
| 14. | Arco Led Optical led diffuser fixing screws | RF0303300 |



RF6600130
Black plug assembly kit & 48V driver



RF26383
Arco Led Switch dimmer 600Ma for new version



RF0303600
Arco Led Switch dimmer 400mA assembly for old version



RF20805
Arco Led Middle electric cable with connectors



F0310000
Marble base



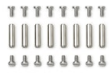
RF0300100
Fixing screw with joint



RF21041
Inox stem



RF02970
Long inox channel



RF0300200

Pins and screw set



RF02971

Medium inox channel



RF00797

Polished reflector



RF0303400

Arco Led Small inox channel with
grid and led



RF0303200

Arco Led Optical led diffuser with
fixing screws



RF0303300

Arco Led Optical led diffuser
fixing screws