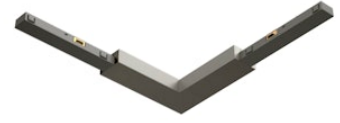


FLOS

06.2609.ER Brushed Steel

90° Corner Feed Dimmable

Designed by FLOS Architectural, 2023

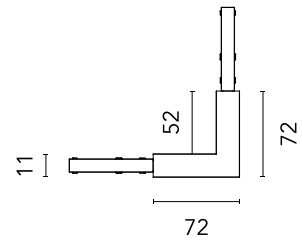


Wall surface, Ceiling surface

90° flat corner. Can be powered. It has a rear space for the supply connection. Rear feeding cable entry.

Are you a professional and your project needs consulting and support?

[BOOK AN APPOINTMENT](#)



Main specifications

Mounting	Wall surface, Ceiling surface
Environments	Indoor dry location
Light sources included	No

Physical

Colour	Brushed Steel
Net weight (kg)	0.02
IP internal	20

Download

[Mounting instructions](#)



Photometric

Extreme cut off	No
-----------------	----

Electrical

Insulation class	III
Forward voltage (V)	24
Power supply	Remote excluded
Dimmable	Yes
Power supply type	Dimmable
Dimming interface	Remote Dimmable (Dimmer Not Included)

Accessories & Power Supply



REQUIRED
Power supply

Electrical

60.9352

LED power supply source for remote installation in 24V/200W electric control panel. To avoid problems of overload it is recommended to install a power source every 185W. 100/240V.



REQUIRED
Power supply

Electrical

60.9777A

Remote Power Supply Non Dimmable 24V. 120W. 220/240V

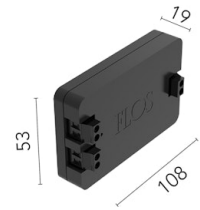


REQUIRED
Power supply

Electrical

60.9705A

Remote Power Supply Non Dimmable 24V. 60W. 220/240V

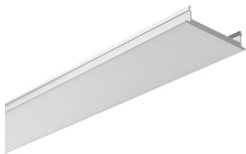


OPTIONAL
Power supply

Electrical

08.0613.14A

Dimmable control box 1-10V, 24/48V. For remote installation.

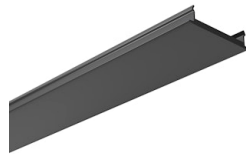


OPTIONAL
Component

Installation

06.2618.40A

Track Cover 3000mm



OPTIONAL
Component

Installation

06.2618.14A

Track Cover 3000mm



OPTIONAL
Connector

Electrical

06.2608.14

Straight Connector